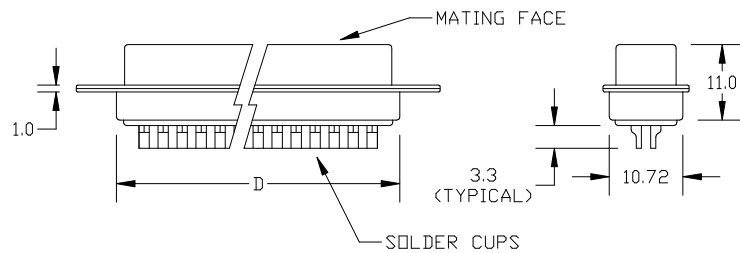
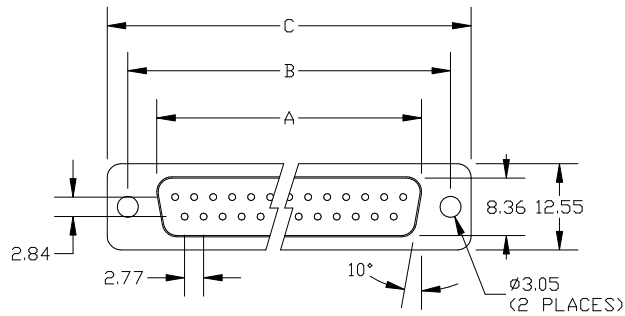
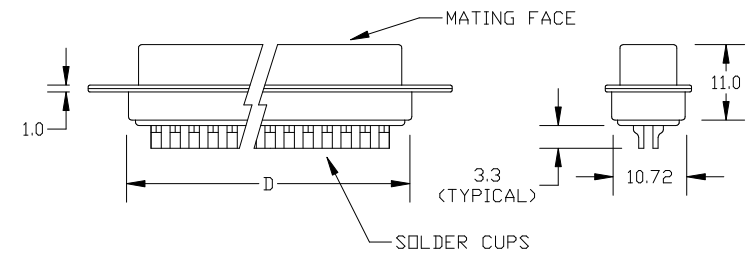
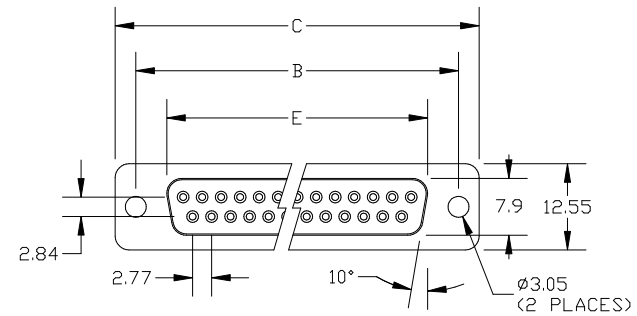


# CNS SERIES: D-SUB SOLDER CUP CONNECTORS

## CNS<sub>x</sub>xM: D-SUB MALE



## CNS<sub>x</sub>xF: D-SUB FEMALE



### DIMENSIONS

POSITION	A	B	C	D	E
9	16.92	25.0	30.8	19.3	16.33
15	25.25	33.3	39.2	27.5	24.66
25	38.96	47.1	53.1	41.3	38.38
37	55.42	63.5	69.4	57.7	54.84

1. SHELL PLATING: TIN
2. CONTACT PLATING: SELECTIVE GOLD FLASH
3. OPERATING TEMPERATURE: -40°C TO +105°C

### DESCRIPTION:

CNS SERIES: D-SUB SOLDER



Winford Engineering  
4169 Four Mile Road  
Bay City, MI 48706

[www.winfordeng.com](http://www.winfordeng.com)

989-671-2941

DIMENSIONS ARE IN MILLIMETERS