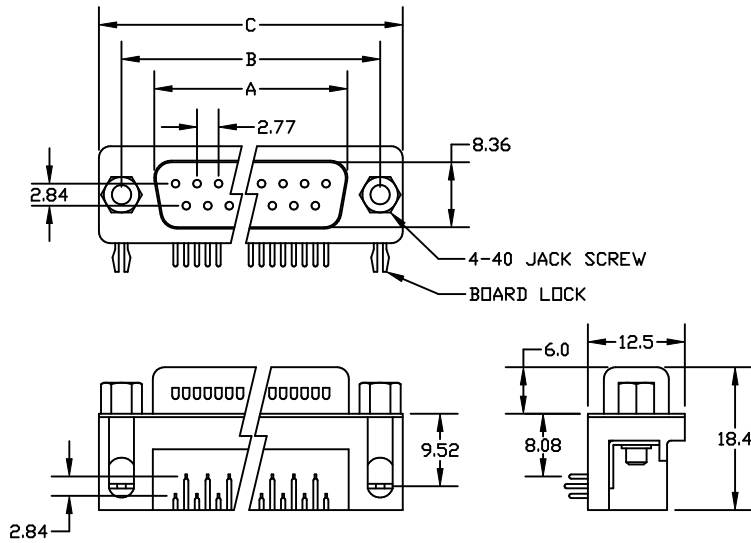
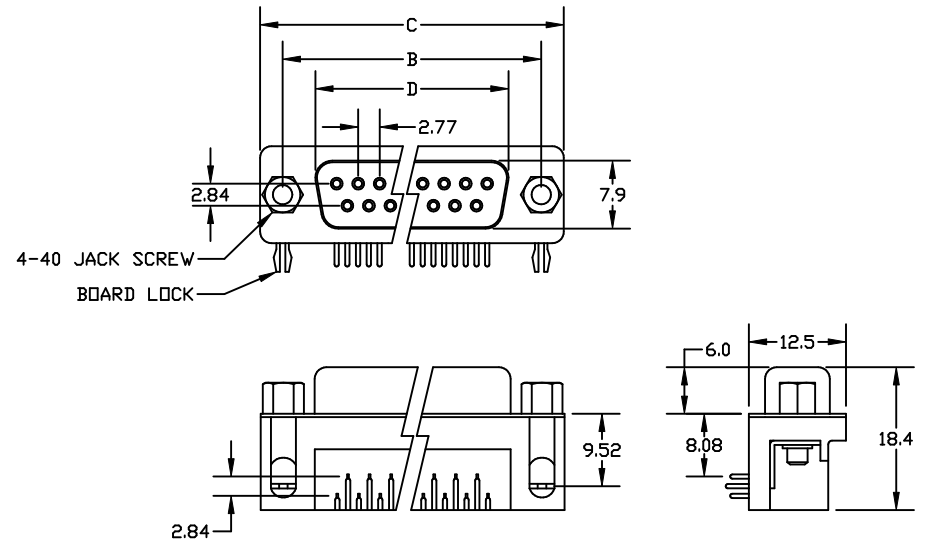


CNR SERIES: D-SUB RIGHT ANGLE  
7.2/8.08mm (.318") FOOTPRINT

CNRxxM: D-SUB MALE



CNRxxF: D-SUB FEMALE

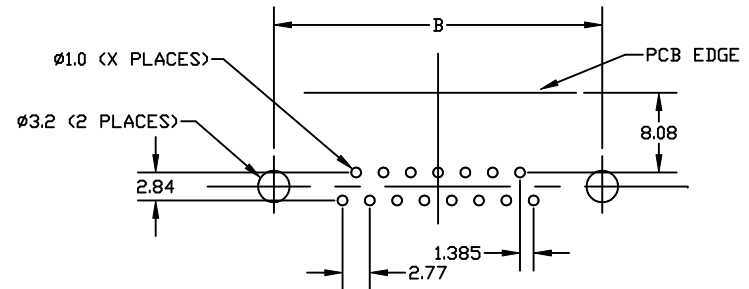


DIMENSIONS

POSITION	A	B	C	D
9	16.92	25.0	30.8	16.33
15	25.25	33.3	39.2	24.66
25	38.96	47.1	53.1	38.38
37	55.42	63.5	69.4	54.84

1. SHELL PLATING: TIN
2. CONTACT PLATING: GOLD FLASH
3. OPERATING TEMPERATURE: -40°C TO +105°C

RECOMMENDED PCB FOOTPRINT



DIMENSIONS ARE IN MILLIMETERS

DESCRIPTION:

CNR SERIES: D-SUB RIGHT ANGLE

**WINFORD**

Winford Engineering  
4169 Four Mile Road  
Bay City, MI 48706

www.winfordeng.com

989-671-2941