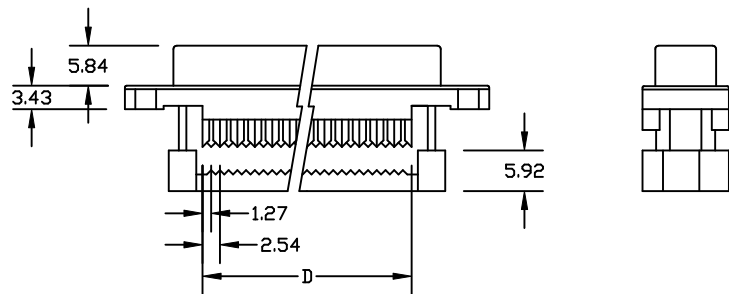
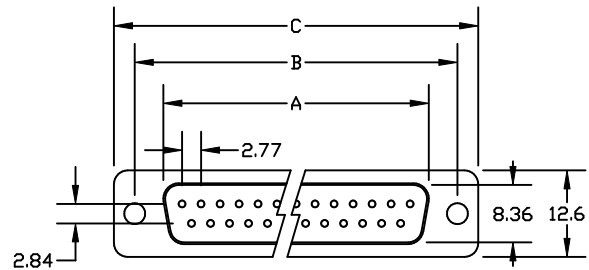
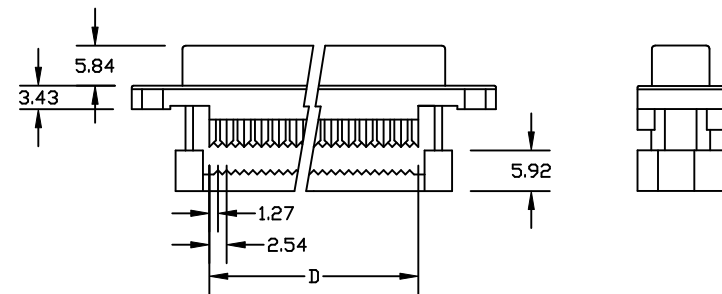
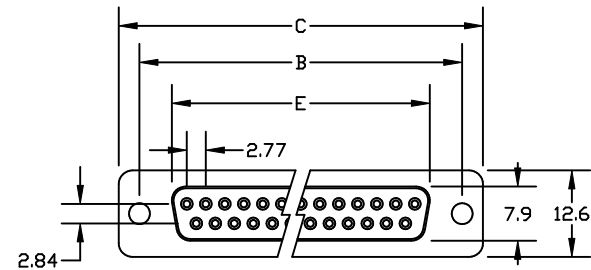


CNI SERIES: D-SUB IDC FLAT RIBBON CABLE CRIMP CONNECTORS

CNI_xM: D-SUB IDC MALE



CNI_xF: D-SUB IDC FEMALE

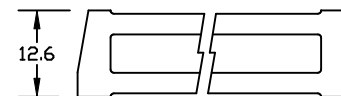
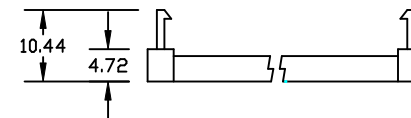


DIMENSIONS

POSITION	A	B	C	D	E
9	16.92	25.0	30.8	10.16	16.30
15	25.25	33.3	39.1	17.78	24.50
25	38.96	47.1	53.1	30.48	38.30
37	55.45	63.5	69.5	45.72	54.80

1. METAL SHELL. PLATING: TIN
2. CONTACT PLATING: SELECTIVE GOLD FLASH
3. OPERATING TEMPERATURE: -40°C TO +105°C

STRAIN RELIEF (INCLUDED)



DIMENSIONS ARE IN MILLIMETERS

DESCRIPTION:

CNI SERIES: D-SUB IDC CRIMP

WINFORD

Winford Engineering
4169 Four Mile Road
Bay City, MI 48706

www.winfordeng.com

989-671-2941